

FUJITSU Printer 9870

Boarding Pass & Baggage Tag Printer Airport Ticketing Solution – General Purpose Printer

Introduction

FUJITSU Printer 9870 is General purpose printer using the essence of Fujitsu's most advanced technologies. It has not only high performance and reliability but also its smallness for limited space and reasonable price for customers.

Main Features

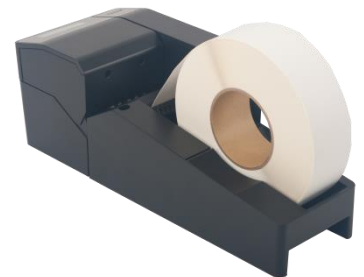
- World Class performance & Reliability
 - AFR (Annualized Failure Rate) is less than 1%
 - The Fastest Print Speeds up to 260mm/sec (10 inch/sec) in high-speed mode
- Compact Design
 - W 150 - H 131.5 - D 201 (mm)/ W 5.9 - H 5.2 - D 7.9 (inch)
 - Weight 1.8 Kg / 4 pound(Excluding cable cover)
- User Friendly
 - Single action to set Baggage tag roll
 - Easy maintenance for thermal head
- Versatile Interface
 - Fully AEA 2009
 - Microsoft's Windows® driver for airline use
 - Certified to;
 - ✓ SITA Airport Connect (CUTE)
 - ✓ ARINC iMUSE / vMUSE



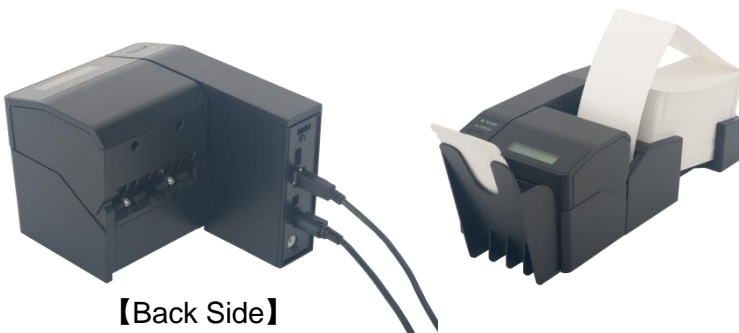
Product No.
KD04107-A001
(Without LCD)



Product No.
KD04107-A011
(With LCD)



Roll Stand
Option for Baggage Tag



【Back Side】



Stacker



Tray

Options for Boarding pass

Boarding Pass & Baggage Tag Printer

Specifications

Product life (M = Million, K = Thousand)	<ul style="list-style-type: none">Printer : ATB / Thin Paper / BTP 2M / 2M / 800K (Tickets)Thermal Head : 750K / 750K / 300K (Tickets)Cutter : 500K / 2M / 800K (Tickets)
MCBF (Mean Cycles Before Failure)	<ul style="list-style-type: none">70 millions lines
MTBF (Mean Time Between Failure)	<ul style="list-style-type: none">440,000 Hours
AFR (Annualized Failure Rate)>	<ul style="list-style-type: none">Less than 1%
Jam Rate	1/20,000 for Boarding Pass / 1/10,000 for Baggage Tag ※Due to our test
Environment Installed	50W maximum at operation, 4.5W maximum at standby <ul style="list-style-type: none">At operation : 5 - 35°C / 10 - 80%RH Alarm buzzer, 0 - 5,000m altitudeAt storage : -20 - 60°C / 8 - 90%RH
Easy Maintenance	The computer tool for diagnostic and test function Statistics data for transactions by log files Dot detection Error message on LCD (Limited to LCD specifications)
Printer modules	<ul style="list-style-type: none">Direct Thermal Resolution : 203dpiPrinter Line width : 80mmSelectable Printer Speed : 5,6,7,8,9,10 inch/secSelectable Print Density
Barcode	<ul style="list-style-type: none">Conform to the IATA standard -1D : Interleaved 2 of 5 / Industrial 2 of 5 / Code 39 & Code 128 / EAN 13 -2D : PDF417 / Aztec /Data Matrix / QRWindows spooler -1D : UPC-A / UPC-E / EAN8 / JAN8 / EAN13 / JAN13, Interleaved 2 of 5 / Codabar(NW-7) / Code39 / Code93 / Code128 -2D : PDF417 /Data Matrix / QR
Conformable Standards	: Fully AEA compatible : IATA Resolution 722e : IATA Resolution 740 and 1740e
Data Interface	<ul style="list-style-type: none">AEA standardCertified to : SITA AirportConnect (CUTE) / ARINC iMUSE & vMUSEMicrosoft's Windows ®driver for airline use ※Update sequentially
Physical Data	F9870 : W 150 – D 260 – H 131.5 (mm) / 1.8Kg [W 5.9 – D 10.2 – H 5.2 (inch) / 4 lb] F9870 + Roll Stand : W 150 – D 387.4 – H 131.5 (mm) / 2.2Kg [W 5.9 – D 15.2 – H 5.2 (inch) / 4.9 lb] F9870 + Tray + Stacker : W 150 – D 468.8 – H 155 (mm) / 2.2Kg [W 5.9 – D 18.4 – H 6.1 (inch) / 4.9 lb]
Connectivity	USB 2.0 (F9870 GPP Virtual com enable to connect with RS232C) / F9870 contains USB cable (2 meters)
Power Supply	100 – 240V, 50/60Hz
Agency Approvals	UL - cUL / CE Marking / CCC ※Updated sequentially
Option	Roll Stand (Baggage tag roll paper), Tray & Stacker (Boarding pass paper)

Contact

FUJITSU FRONTECH LIMITED

Global Business Group

1776 Yanokuchi, Inagi-shi, Tokyo 206-8555, Japan

URL: <http://www.fujitsu.com/jp/group/frontech/en/>

Inquiry: <http://www.fujitsu.com/jp/group/frontech/en/contact/>